

# CERTIFICATE OF LOCATION OF GOVERNMENT CORNER

NORTH QUARTER Corner of Section 05, Township 107N, Range 43W

5th Principal Meridian, State of Minnesota, County of Murray

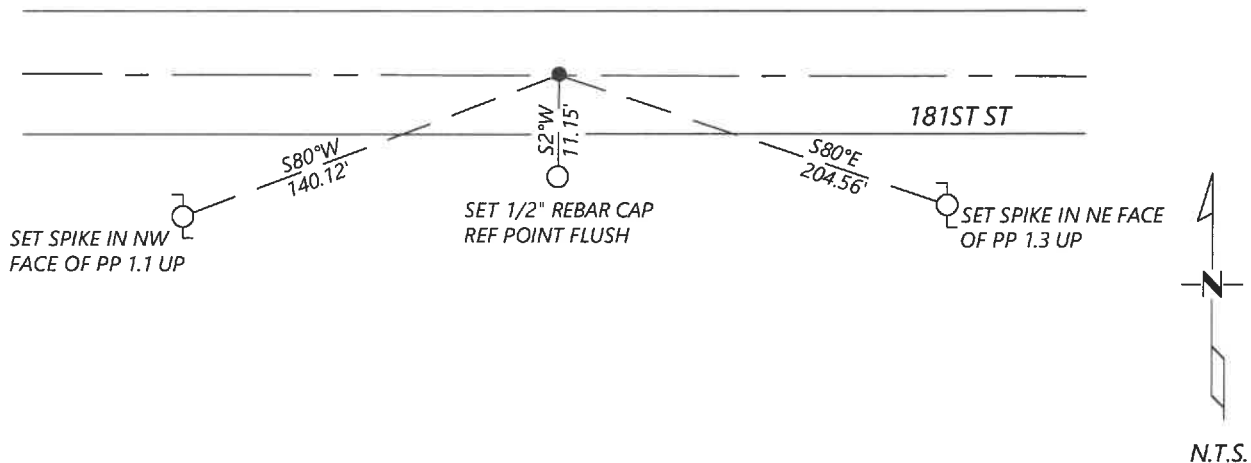
At the corner location shown on the sketch:

☒ On 11/29/2022 found a nothing.  
DATE

☐ left monument as found ☐ lowered monument ☐ removed monument (explain)

☒ On \_\_\_\_\_ placed a 1/2" rebar with cap 56488 online and at midpoint per 2001 Moseng record along  
DATE with 3 new ties.

## SKETCH OF REFERENCE TIES



Statement of evidence for this corner location is on back of this page.

I hereby certify that this document was researched and prepared by me or under my direct supervision and that I am a licensed Land Surveyor under the laws of the State of Minnesota.

Signature Karen Brown

Date 12/29/2022 License No. 56488

Title:

☒ Land Surveyor ☐ Professional Engineer  
☐ County Surveyor ☐ County Engineer

## OFFICE OF THE COUNTY RECORDER

County of Murray

I hereby certify that this

document was filed in the Co.

**JAN 05 2023**

Recorder's office at \_\_\_\_\_ M. on the

\_\_\_\_\_ day of \_\_\_\_\_ A.D. 20

County Recorder Karen Brown

by \_\_\_\_\_, Deputy

DOCUMENT NO. \_\_\_\_\_

KYLE JOHNSON  
Minnesota License No. 56488

**Statement of Evidence:**

North Quarter Corner of Section 05, Township 107 North, Range 43 West, 5th Principal Meridian, Murray County, Minnesota.

*1861- GLO set a post, deposited charcoal made a mound of earth with trench and pits.*

*2001- Lyle Moseng, LS11943, filed a corner record stating he excavated and found nothing and set a 1" pipe at midpoint and on line did not set any ties.*

*2022- Westwood Professional Services searched the area but found nothing. Set 1/2" rebar with cap LS56488 online and at midpoint per 2001 Moseng record. Holding position as the best available evidence.*

Analysis of the recovered data, field evidence and survey measurements, indicates that the monument found is the correct perpetuation of this corner. For additional information concerning this corner please contact Westwood Professional Services.